



# Turning "Big Data" into "Big Information"

Next Generation Solutions for  
Integrated Decision Making

**DIGITALGLOBE®**



Before we look to the future, it's important to look at the **evolution** of the commercial satellite industry.

1st Era:  
**Resolution**

80 → 0.5 Meter Pixels



2nd Era:  
**Accuracy**

1:10,000 accuracy



3rd Era:  
**Speed**

Daily revisit  
Delivery in  
hours/minutes



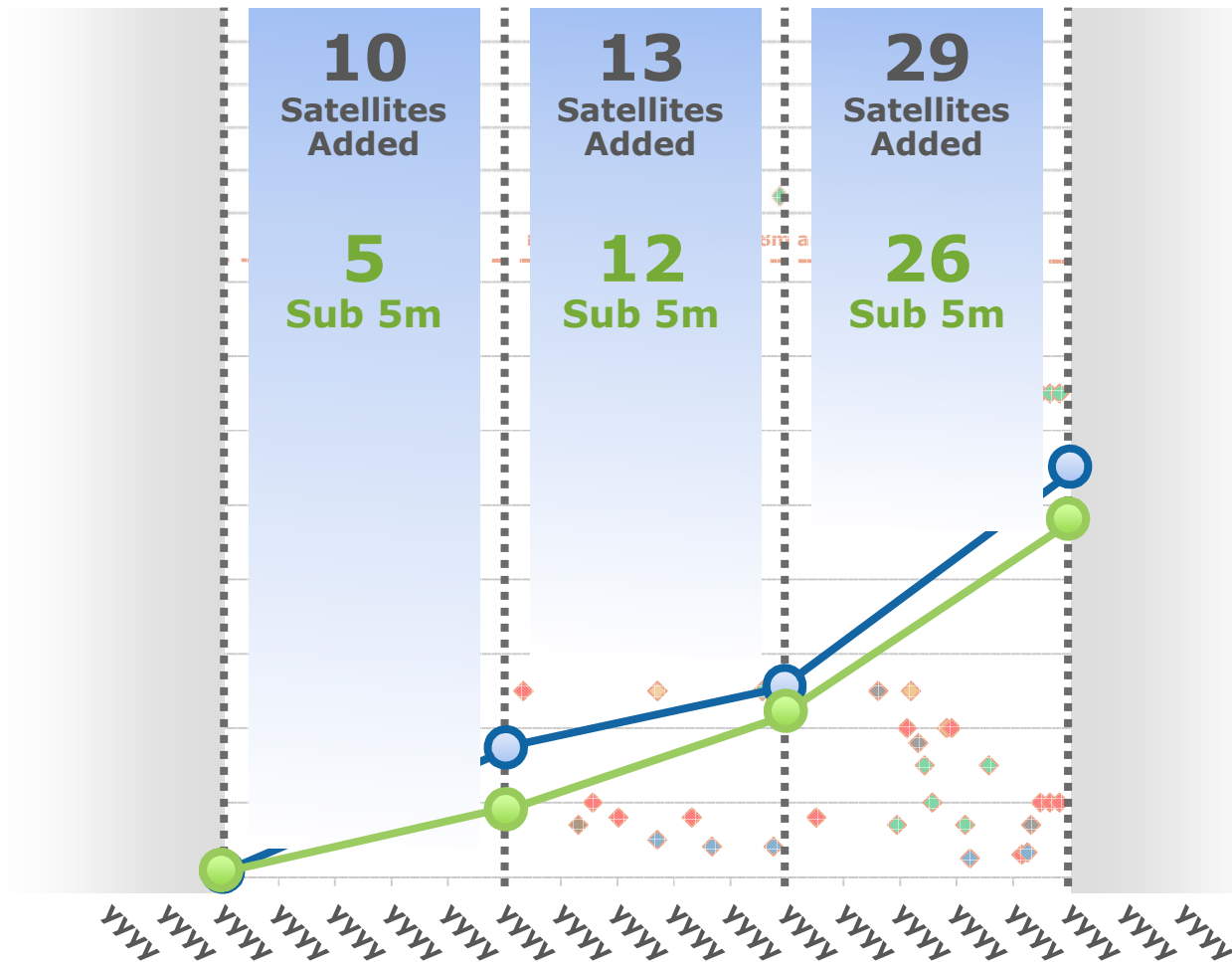
4th Era:  
**Analytics**

Multi Spectral  
Super Spectral  
Cloud computing



Today's level of data collection presents **unprecedented opportunities** to solve tomorrow's problems.

## Global Electro-Optical Constellation



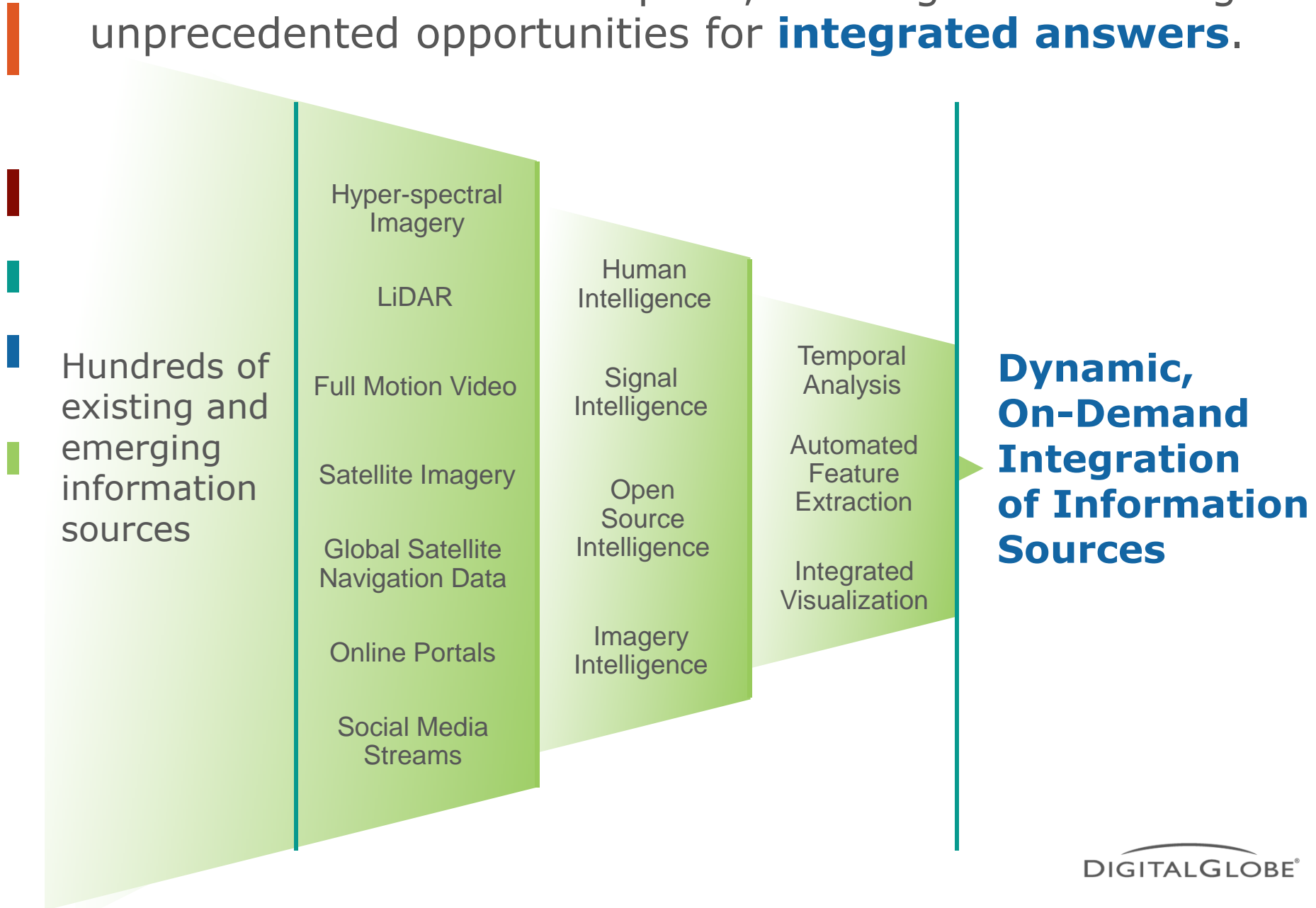
## 4th Era: Analytics

Richer content obtained through advanced MSI, LiDAR and Hyper-spectral imagery



DIGITALGLOBE®

And we're at an inflection point, with Big Data creating unprecedented opportunities for **integrated answers.**



Moving forward, a top priority for our industry must be to **make it easier** for you to find those answers.

**OPPORTUNITY**

Using past trends to anticipate future events

**OPPORTUNITY**

Doing more, faster, with fewer resources

**OPPORTUNITY**

Finding and synthesizing the right, actionable information within all available data sources



You can't predict the future, but looking to the past can now be an effective way to **identify relevant trends**.

**Areas of Impact**

**How More Data Helps**

**LONG-TERM  
CHANGES**

**Analyzing events occurring  
over years and decades**

**SEASONAL  
CHANGES**

**More accurately monitoring  
regularly recurring events**

**PATTERNS  
OF LIFE**

**More easily monitoring daily  
events that reveal relationships**





You can't predict the future, but looking to the past can now be an effective way to **identify relevant trends.**



## **PATTERNS OF LIFE**

We've all supported automation initiatives for years, but current technologies are taking the **next step forward**.

**Areas of Impact**

**How Data Richness Helps**

**CATEGORIZING**

**More accurately identifying specific surface characteristics**

**EXTRACTION**

**Efficiently capturing feature information**

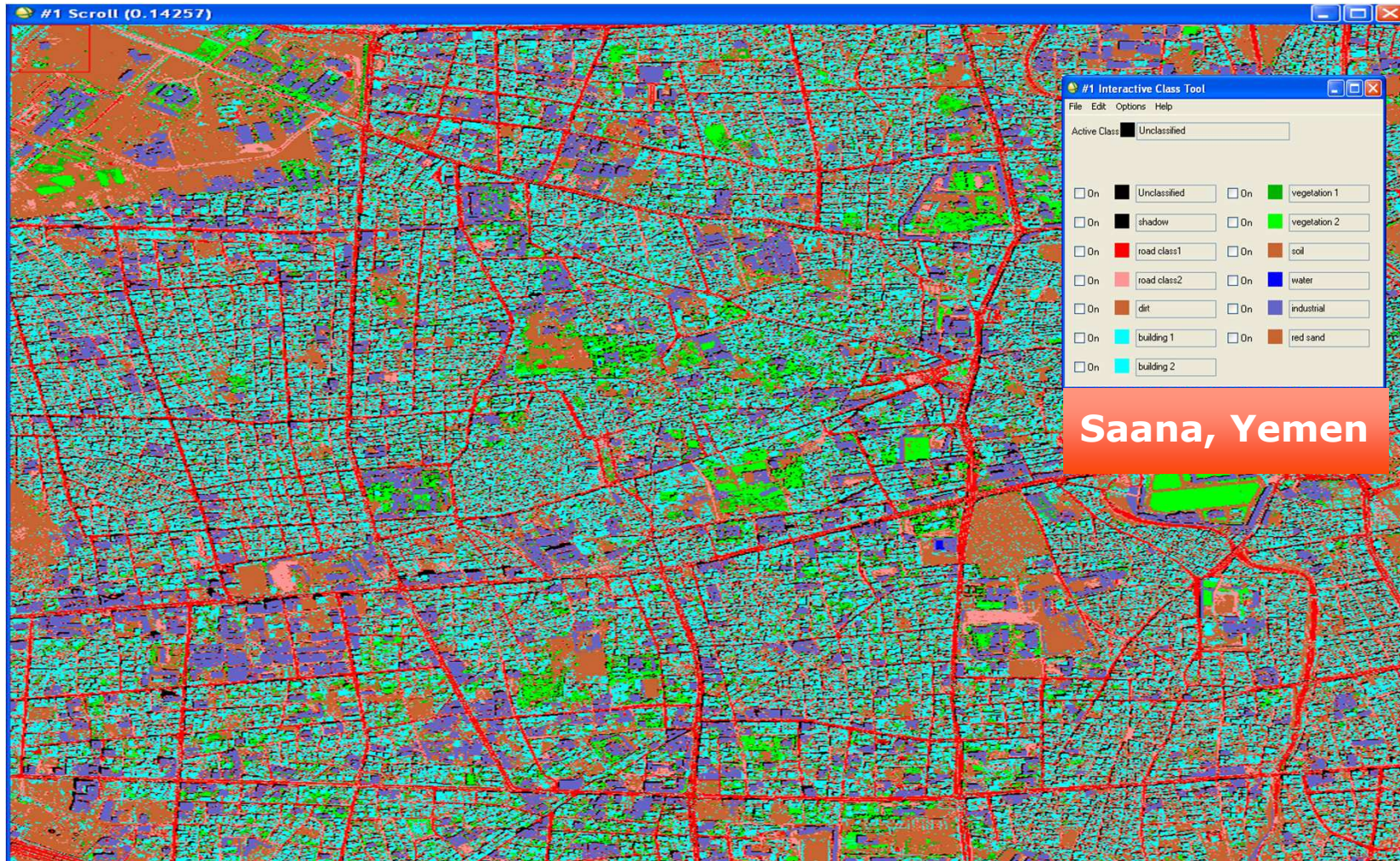
**LEARNING**

**Increasing the value, relevancy and accuracy of results**





We've all supported automation initiatives for years, but current technologies are taking the **next step forward**.



## EXTRACTION



Tremendous new opportunities are emerging with **integrated visualization** of complex data sets.

**Areas of Impact**

**How Advanced Visualization Helps**

**TRADITIONAL  
SOURCES**

**Enables broad application of  
authoritative sources**

**CROWD-SOURCED  
INFORMATION**

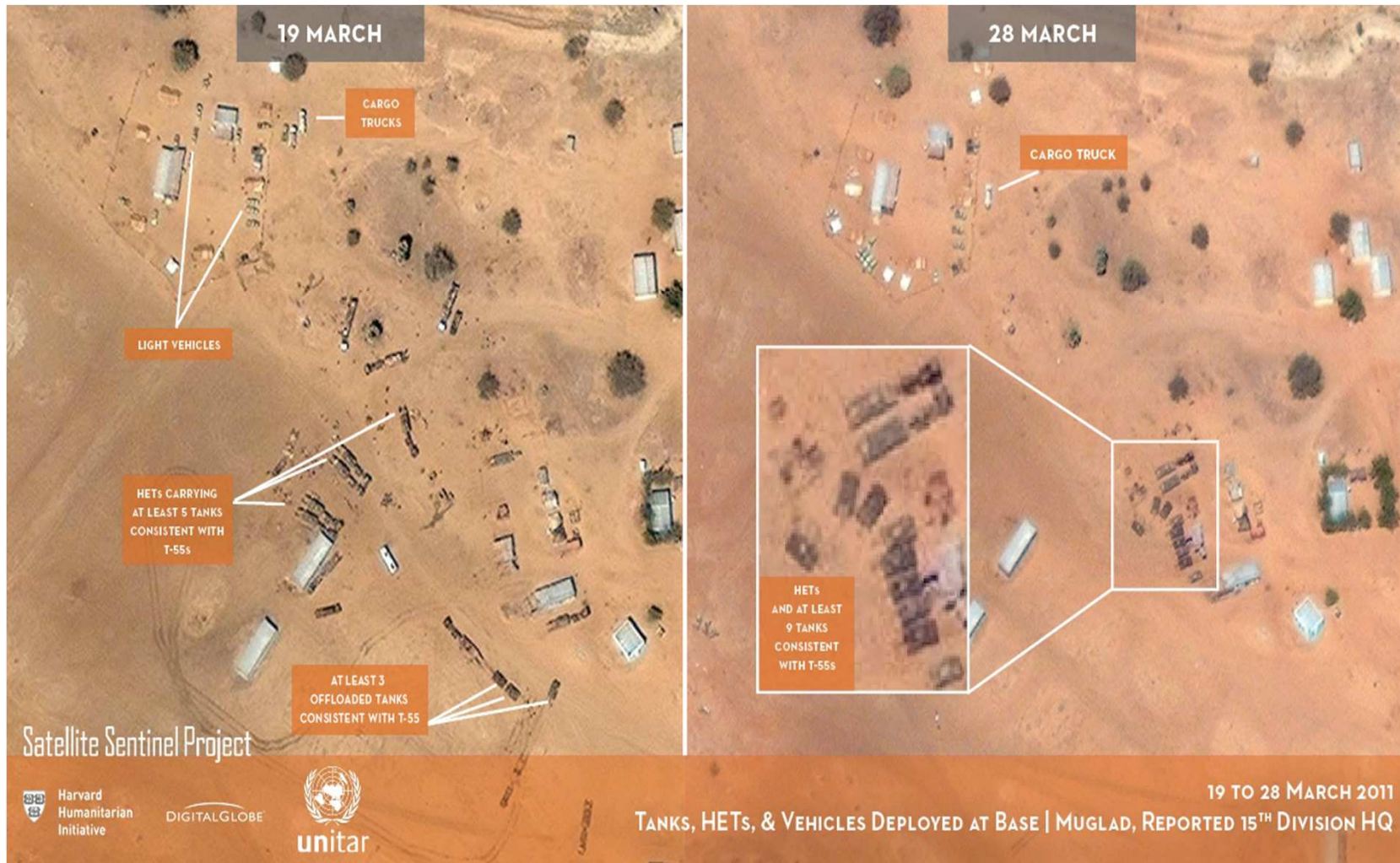
**Enables validation of “suspect”  
data**

**FIELD COLLECTED  
DATA**

**Improves efficiency of mobile  
data collection**



Tremendous new opportunities are emerging with **integrated visualization** of complex data sets.



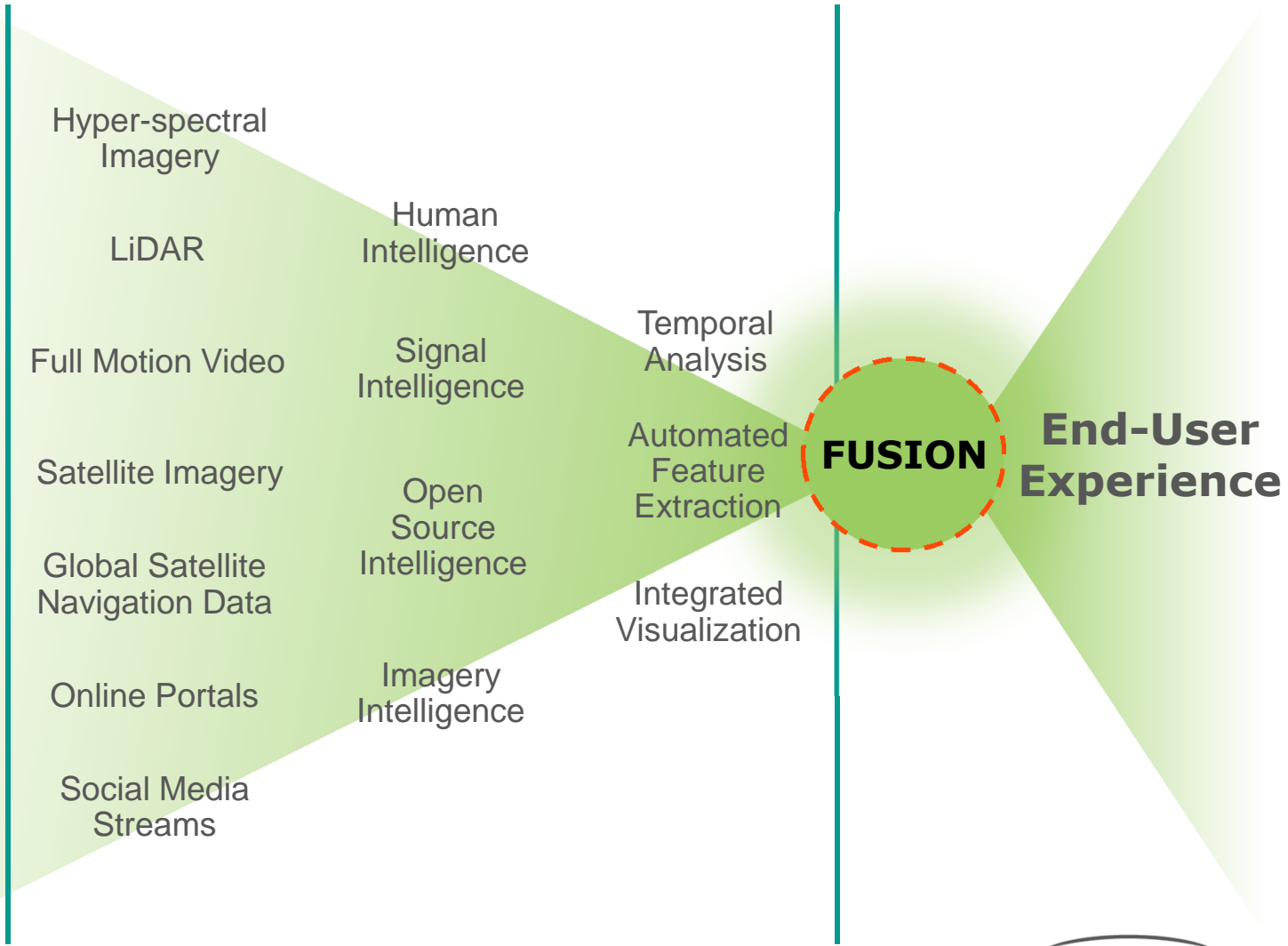
## FIELD COLLECTED DATA



So we find ourselves at an inflection point, with unprecedented opportunities for **integrated answers**.



Hundreds of existing and emerging information sources



Helping you find the **answers that matter**, faster, is becoming one of our industry's top priorities.



Hundreds of existing and emerging information sources



## Single Integrated Interface



- Multi-layer
- Centralized, Customizable
- Optimized for Decision Making
- Tailored to the way you work
- Shareable/Collaborative
- Easy, Fast, Intuitive



The future of our industry requires **focused priorities** and **clarity of purpose**.

We as providers of geospatial information services must continue increasing the value we provide you, by delivering ...



**More information, not less**



**Tools to extract the full value of future sensing technologies**



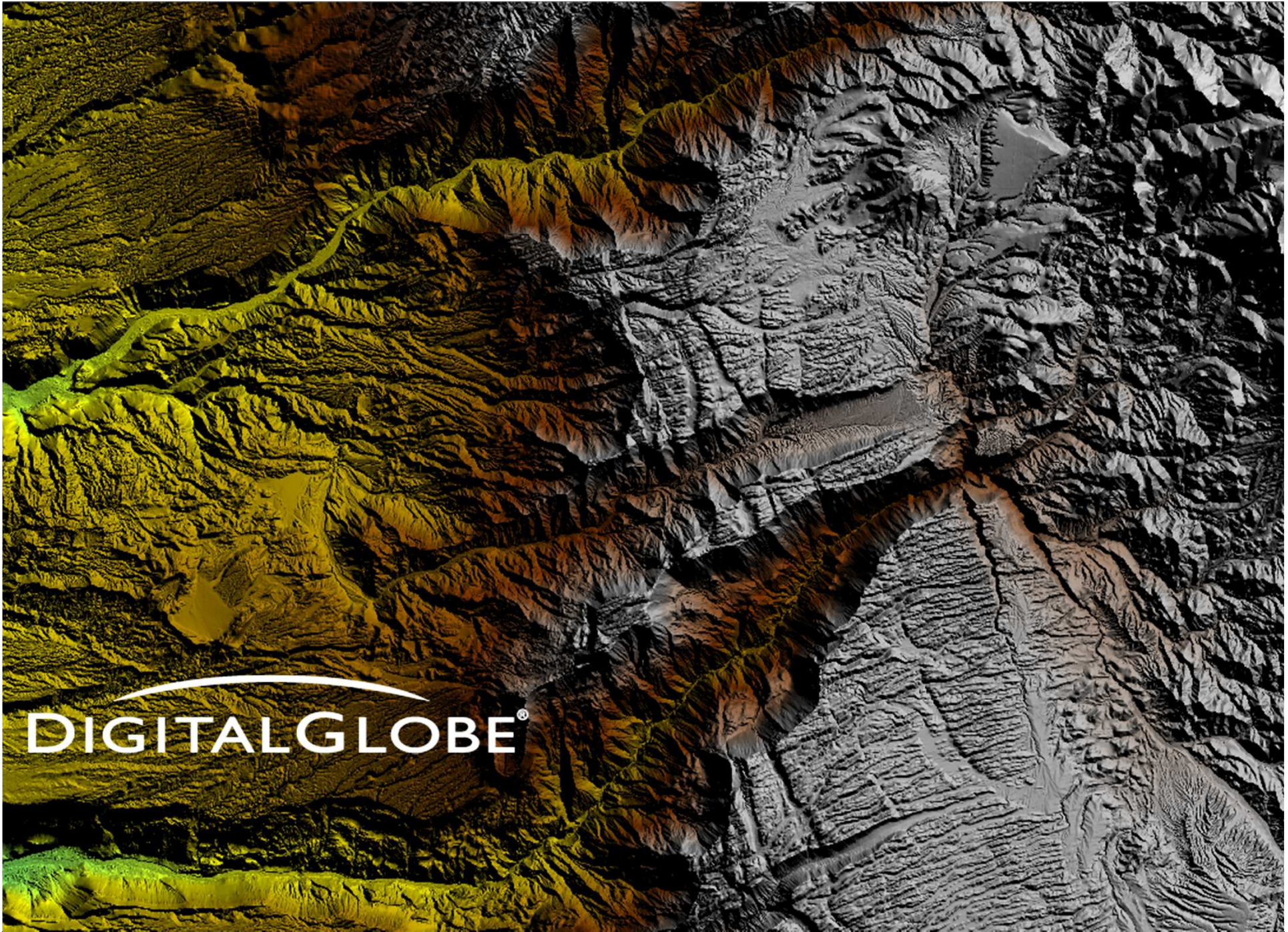
**Integrated applications that help you find trusted answers, faster and easier**



**Platforms that enable greater sharing and more collaboration**







**DIGITALGLOBE®**